



**CPVO**

Community Plant Variety Office

# ORGANIZATIONAL STRUCTURE OF CPVO

**Francesco MATTINA**  
Head Legal Unit

**IPKEY Study Visit**  
Angers, 4 July 2016

# The EU Plant Variety System

A system for the protection of plant varieties was established by a Regulation of the European Union in 1994.

The intellectual property rights granted under this system are valid throughout the territory of the 28 Member States (including Croatia who joined last July, but 27 after the implementation of the Brexit) of the European Union (EU).



# Legal Basis

## Council Regulation (EC) No 2100/94 on Community plant variety rights

and 3 Commission Regulations relating to:

- **Proceedings before the CPVO**  
(Regulation (EC) No 874/2009)
- **Fees payable to the CPVO**  
(Regulation (EC) No 1238/95)
- **The agricultural exemption**  
(Regulation (EC) No 1768/95)



# The CPVO

The system is run by the **Community Plant Variety Office (CPVO)**, an official Agency of the EU with an independent legal status which has been operational since 1995 and is based in Angers (France).

The CPVO is fully self-financed.



- **CPVO Management**

The CPVO is managed by its President. His main duties are the implementation of the budget and to ensure the smooth running of the CPVO. The President is assisted by a Vice-President.

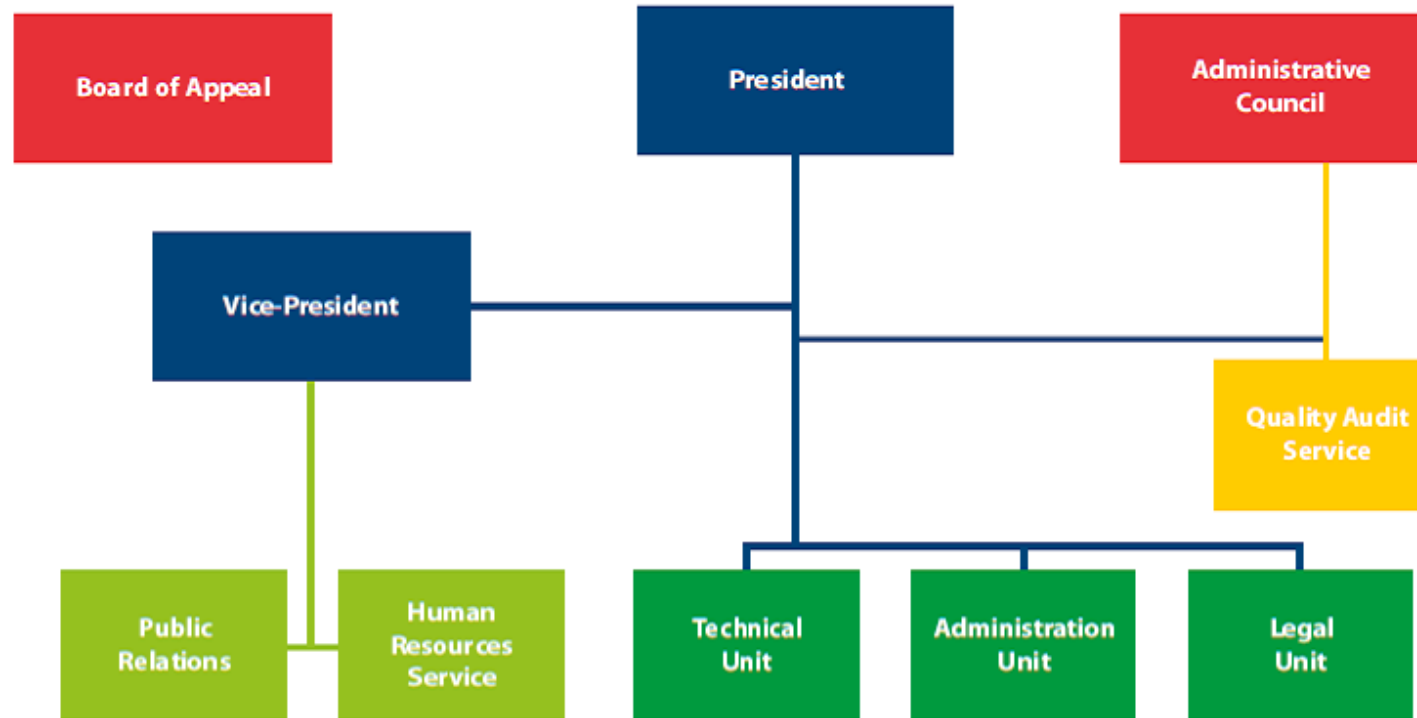
- **Internal organisation**

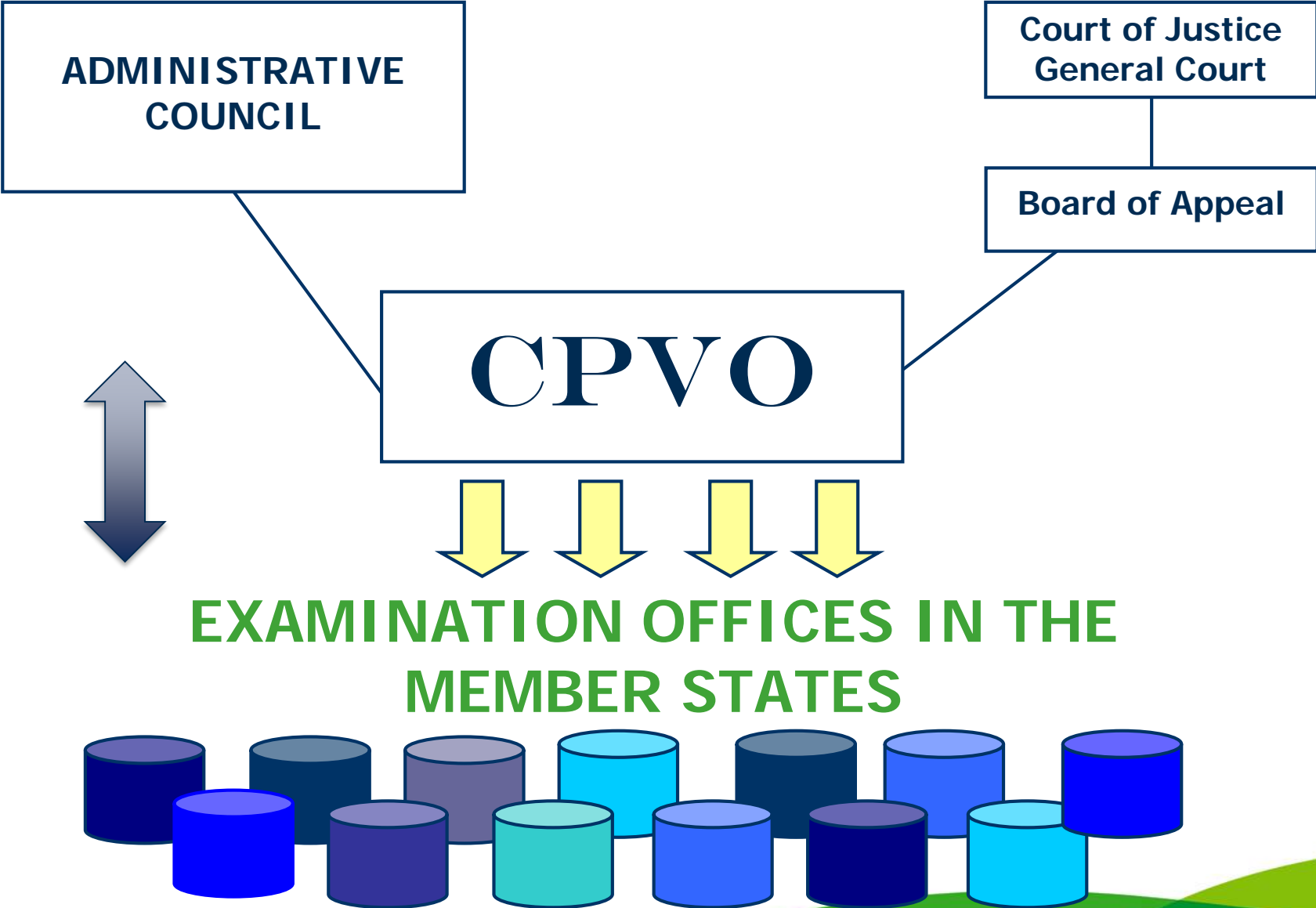
The CPVO has a total of 45 staff members:

- Technical Unit (18)
- Administration and Finance Unit (11)
- Legal Unit (4)
- Quality Audit Service (2)
- Support services:
  - Information Technology (5)
  - Human Resources (2)
  - Presidency Assistance (2)
  - Training/Communication (1)



## ORGANISATION CHART OF THE CPVO





# The Administrative Council

- Monitoring the CPVO
- Composed by representatives of the EU Member States the European Commission and observer organisations
- Budgetary authority
- Entrustment of Examination Offices
- Approval of Technical Protocols
- 2 meetings per year



# The Board of Appeal

- Independent body with the responsibility of deciding appeals brought against decisions of the Office,
- Composition: Chairman and Vice-Chair, members legally and technically qualified,
- Not part of the Staff of the Office but part-time, appointed by the Chairman,
- The BoA is composed by the Chairman, a member rapporteur and a third member,
- The BoA exercise the powers of the Office in reviewing appeals.



# Technical examinations within the EU system

The CPVO has not created its own technical infrastructure.

Technical examination to confirm DUS is carried out by the Examination Offices entrusted by the Administrative Council.



# Technical examination

Attribution of varieties for testing to Examination Offices according to defined criteria:

- Geographical origin of the variety
- Origin of the applicant
- Experience of an examination office
- Wish of the breeder

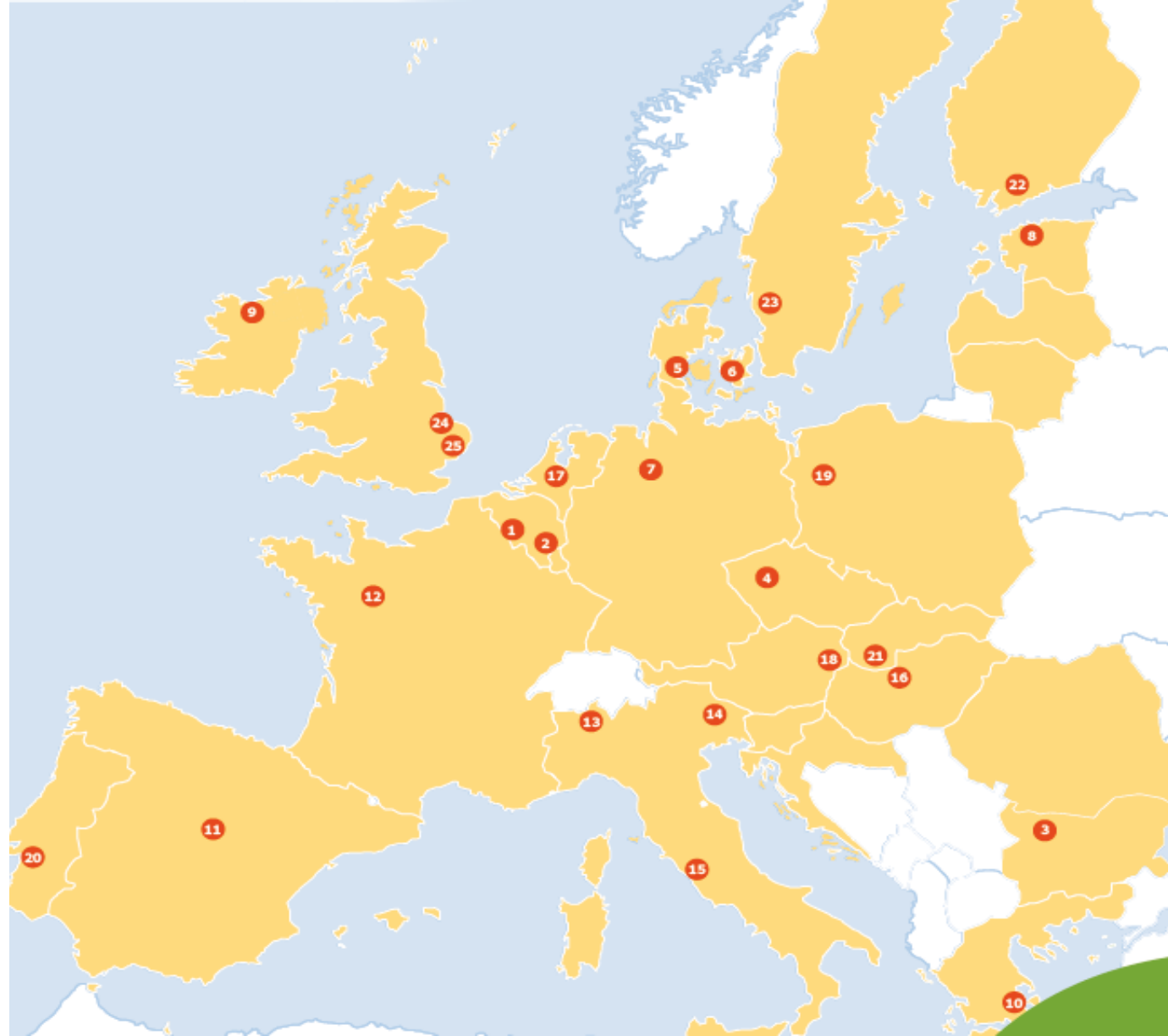




# CPVO · OCVV

Community Plant Variety Office  
Office Communautaire des Variétés Végétales  
3 boulevard Maréchal Foch - CS 10121  
49101 ANGERS CEDEX 2 - FRANCE  
cpvo@cpvo.europa.eu - www.cpvo.europa.eu

# Réseau des offices d'examen de l'OCVV / CPVO examination offices network



- 1 Institut voor Landbouw- en Visserijonderzoek ILVO eenheid Plant  
Cortestraat 21  
9000 Melle - Belgium
- 2 Centre Wallon de Recherches Agronomiques  
4 rue de Uraux - Bâtiment Léon Lacroix  
5030 Gembloux - Belgium
- 3 Ministry of Agriculture and Food Executive Agency for Variety Testing,  
Field Inspection and Seed Control - 125 Tsarigradsko Shosse Blvd., Block 1  
1113 Sofia - Bulgaria
- 4 Central Institute for Supervising & Testing in Agriculture (UKZUZ)  
National Plant Variety Office - Hroznová 2  
658 06 Brno - Czech Republic
- 5 University of Aarhus - Aarhus Department of Food Science  
Københavnsgade 10  
8000 Aarhus - Denmark
- 6 Ministry of Food, Agriculture and Fisheries  
Danish Agrifish Agency - Department of Variety Testing - Teglværtsvej 10  
4230 Skalskov - Denmark
- 7 Bundesessortement  
Osterfeldstrasse 80  
30627 Hannover - Germany
- 8 Agricultural Research Center Viljandi Variety Testing Center  
Metsapere küla  
71005 Pärnu vald (Viljandimaa) - Estonia
- 9 Department of Agriculture, Food and the Marine Office of the Controller  
of Plant Breeders' Rights - Bective Park Lethbridge Co. Kildare  
Ireland
- 10 Ministry of Agriculture - Directorate of Inputs of Plant Production  
Section A - 2 Acharnon street  
10667 Athens - Greece
- 11 Oficina Española de Variedades Vegetales (OEVV)  
Ministerio de Agricultura, Alimentación y Medio Ambiente - C/ Almagro nº33  
28000 Madrid - Spain
- 12 GEVES - Groupe d'Etude et de contrôle des Variétés et des Semences  
Direction SEV - 25 Rue Georges Mond - CS 90024  
49071 Beaucouët Cedex - France
- 13 CRA-SCS - Consiglio per la Ricerca e Sperimentazione in Agricoltura  
(CRA) Centro Sperimentazione e Certificazione Semerati (SCS) - Via Ugo Bassi 8  
20159 Milano - Italy
- 14 C.R.A. - VET - Centro di ricerca per la viticoltura  
Viale XXVIII Aprile 26  
31015 Conegliano Veneto (TV) - Italy
- 15 C.R.A. - FRU - Centro di Ricerca per la Frutticoltura  
Via S. Francesco, 52  
00134 Roma (RM) - Italy
- 16 National Food Chain Safety Office (NÉBIH)  
Directorate of Plant Production and Horticulture - Kistéri K. u. 24.  
1024 Budapest - Hungary
- 17 Rijksinbous  
Afdeling/Department Rasenonderzoek - Solweg 22  
2371 GD Rosolferendaven - The Netherlands
- 18 Bundesamt für Ernährungssicherheit p.A., Österreichische Agentur für  
Gesundheit und Ernährungssicherheit GmbH - Spargelfeldstraße 191  
1220 Wien - Austria
- 19 COBORU  
Research Centre for Cultivar Testing - Centralny Czerodki Badania Odmian Roślin  
Uprzewyżch - 63022 Sępólno Wielkie - Poland
- 20 Direcção-Geral de Alimentação e Veterinária  
Largo da Academia Nacional de Belas Artes, 2  
1249-105 Lisboa - Portugal
- 21 Central Controlling and Testing Institute in Agriculture (UKZUP)  
Department of Variety Testing - Matúškova 21  
603 16 Bratislava - Slovakia
- 22 Finnish Food Safety Authority Evira  
Puhkuranta 3  
00790 Helsinki - Finland
- 23 The Swedish Board of Agriculture  
Seed Division  
551 83 Jönköping - Sweden
- 24 Food and Environment Research Agency (FERA)  
1st floor, Eastbrook - Shaftesbury Road  
Cambridge CB2 0DR - United Kingdom
- 25 NEAB  
Huntingdon Road  
Cambridge CB3 0LE - United Kingdom



# Entrustment of examination offices

## Entrustment process

- Examination Offices apply for entrustment
- Definition of the envisaged scope of entrustment (list of species)
- Detailed quality requirements have to be fulfilled
- Audit procedure by the CPVO Quality Audit Service
- Formal entrustment by the CPVO's Administrative Council



**Thank you  
for your attention!**

